

Divisions affected: Abingdon North; Churchill and Lye Valley; Iffley Fields and St Marys Jericho and Osney; Leys; St Clements and Cowley Marsh; St Margarets; Wolvercote and Summertown

## **CABINET MEMBER FOR ENVIRONMENT – 21 JANUARY 2021**

### **OXFORD & ABINGDON - VARIOUS LOCATIONS: PROPOSED DISABLED PERSONS PARKING PLACES**

**Report by Interim Corporate Director Communities**

#### **Recommendation**

The Cabinet Member for Environment is RECOMMENDED to approve the proposed provision of Disabled Persons Parking Places (DPPP) at: Corunna Crescent; Flexney Place; Quartermain Close as advertised (with minor adjustments being made to accommodate concerns raised in the consultation) and also to approve the removal of the DPPP in Mill Street as advertised.

But defer approval of the proposals at the following locations pending further investigations: Bourne Close; Divinity Road (removal).

#### **Executive summary**

1. Provision of Disabled Persons Parking Places is reviewed when requested by members of the public. Specific proposals are assessed applying national regulations and guidance on the suitability of providing new bays or amending or removing existing ones.

#### **Financial Implications**

2. Funding for the proposed waiting restrictions has been provided from the County Council's revenue budget.

#### **Equalities and Inclusion Implications**

The provision of disabled persons parking places assists those with a mobility impairment

#### **Sustainability implications**

3. The proposals would help facilitate the mobility of disabled persons in the vicinity of their places of residence.

## Introduction

4. This report presents objections received to a statutory consultation to remove, amend and introduce disabled persons parking places (DPPPs) at various locations in Oxford.

## Background

5. The above proposals have been put forward following requests from residents, including – where a new place has been requested - an assessment of eligibility, applying the national guidelines on the provision part of such parking places. Plans at Annex 1 to Annex 6 show those locations where objections have been received or concerns raised.

## Consultation

6. Formal consultation on the proposal was carried out between 8 October and 6 November 2020. A notice was placed in the Oxford Times and Oxfordshire Herald Series newspapers and emails sent to statutory consultees including Thames Valley Police, the Fire & Rescue Service, Ambulance service, Oxford City Council and local County Councillors. Notices were placed on site and letters sent directly to properties in the immediate vicinity and adjacent to the proposals.
7. Thames Valley Police and Abingdon Town Council have not objected.
8. Twenty-five responses were received from members of the public during the course of the consultation and these are summarised in the tables below:

Town	Location	Support	Object	Concerns
Oxford	Bourne Close		1	5
	Bramling Way	1		
	Corunna Crescent			1
	Divinity Road		1	
	Farndon Road	1		
	Flexney Place			2
	Mill Street		2	
	Quartermain Close	1	1	
	West Street	2		
Abingdon	Boxhill Walk	7		

9. The responses are recorded at Annex 7 with copies of the full responses available for inspection by County Councillors

**Response to objections and other comments**

10. Comments and recommendations in response to the concerns and objections received are provided at Annex 7 in respect of each of the proposed site.

**Oxford – Bourne Close – proposed DPPP**

11. One objection received and five concerns raised. The area is a turning point for vehicles including ambulance drivers carrying out daily visits and therefore it is recommended that this proposal be deferred.

**Oxford – Bramling Way – proposed DPPP**

12. One expression of support received. It is recommended that this proposal is approved.

**Oxford – Corunna Crescent – proposed DPPP**

13. One concern raised on the location of the DPPP. It is recommended that this proposal is approved. However, consideration needs to be taken into account on its location so as not to obstruct access and egress to driveways.

**Oxford – Divinity Road – proposed removal of DPPP**

14. One objection was received on the removal of this bay as it is still used by a disabled person. It is recommended that the space remains in place.

**Oxford – Farndon Road – proposed DPPP**

15. One expression of support received. It is recommended that this proposal is approved.

**Oxford – Flexney Place – proposed DPPP**

16. Two concerns raised regarding access to properties and parking issues. It is recommended that this proposal is approved.

**Oxford – Mill Street – proposed removal of DPPP**

17. Two objections were received on the removal of the bay on the grounds that it is in use on a regular basis. Site investigations have established that there is an off street parking place at the property where the blue badge holder (who is not the driver of the vehicle) lives and that although it is noted that representations have been made that the slope of the parking place and the planned provision of a wheelchair ramp to the door of the property make it difficult for the wheelchair user to access the vehicle when it is parked on the off-street parking place there appears to be no reason why the vehicle cannot be moved onto the road adjacent to the vehicle access for such access to take place. Although there is a waiting restriction applying between 8am and 6.30pm this – or should no waiting at any time restrictions be introduced at a later time - prevents a vehicle waiting here as long as required for access to

and from the vehicle to take place. While it is also accepted that the access is located opposite the junction with Russell Street, the parking of a single vehicle here is not anticipated to present an undue restriction of traffic movement.

**Oxford – Quartermain Close – proposed DPPP**

18. One objection was received. Consideration needs to be made on the location of this bay so that it is positioned more outside number 3. It is recommended to approve this bay but relocate it in front of number 3 and reduce the length where appropriate so as not to obscure any access ways.

**Oxford – West Street – proposed DPPP**

19. Two expressions of support received. It is recommended that this proposal is approved.

**Abingdon – Boxhill Walk – proposed DPPP**

20. Eight expressions of support received. It is recommended that this proposal is approved.

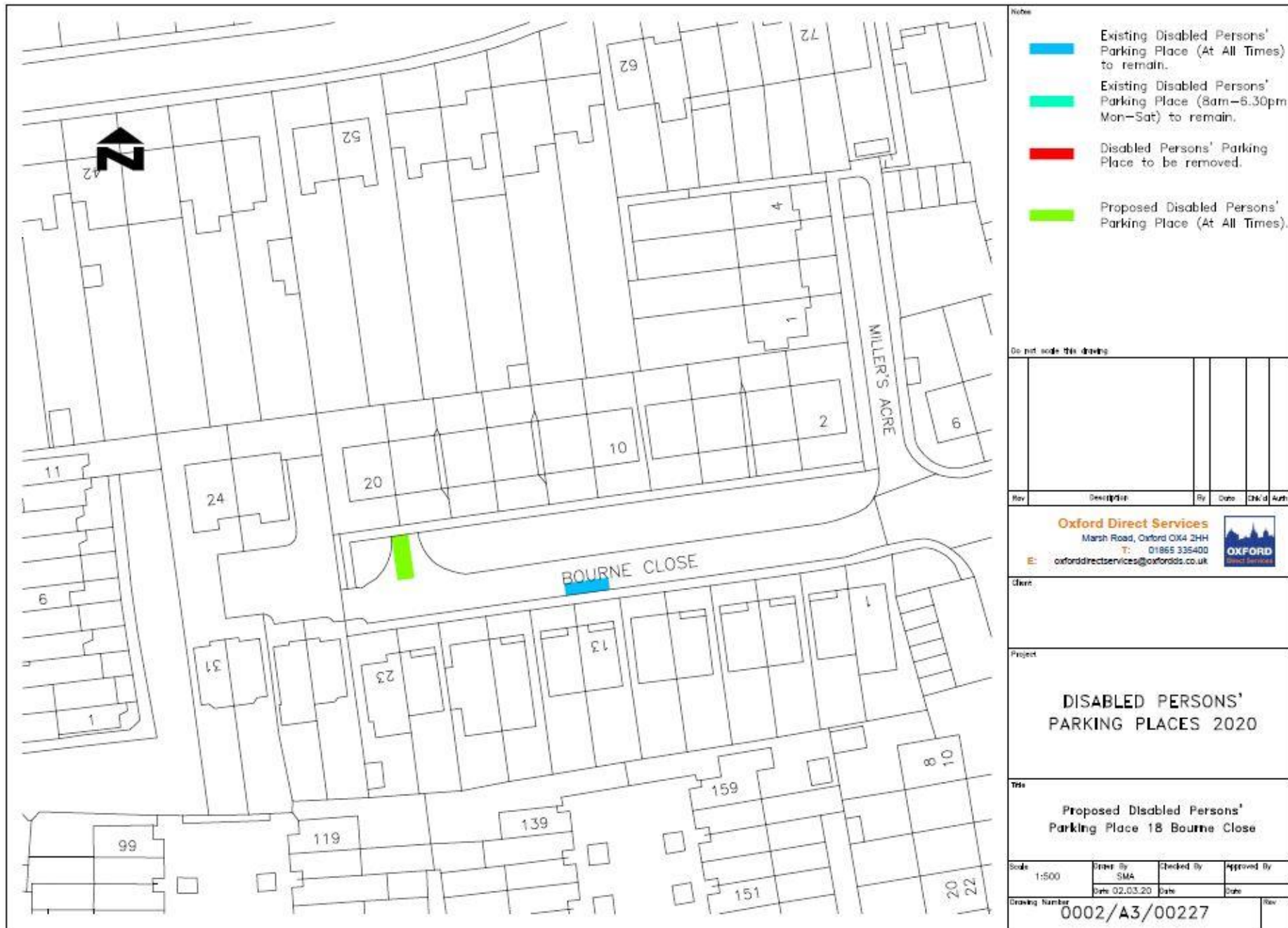
**Sustainability implications**

21. The proposals would help facilitate the mobility of disabled persons in the vicinity of their places of residence.

JASON RUSSELL  
Interim Corporate Director Communities

Annexes:                      Annex 1: Bourne Close proposed new DPPP  
   Annex 2: Corunna Crescent proposed new DPPP  
   Annex 3: Divinity Road proposed DPPP to be removed  
   Annex 4: Flexney Place proposed new DPPP  
   Annex 5: Mill Street proposed DPPPs to be removed  
   Annex 6: Quartermain Close proposed new DPPP  
   Annex 7: Consultation responses

Contact Officers:              Hugh Potter 07766 998704



**Notes**

- Existing Disabled Persons' Parking Place (At All Times) to remain.
- Existing Disabled Persons' Parking Place (8am-6.30pm Mon-Sat) to remain.
- Disabled Persons' Parking Place to be removed.
- Proposed Disabled Persons' Parking Place (At All Times).

Do not scale this drawing

Rev	Description	By	Date	CHK'd	Auth

**Oxford Direct Services**  
 Marsh Road, Oxford OX4 2HH  
 T: 01865 335400  
 E: oxforddirectservices@oxfordds.co.uk

**OXFORD**  
 Direct Services

**Client**

**Project**

**DISABLED PERSONS' PARKING PLACES 2020**

**Title**

**Proposed Disabled Persons' Parking Place 18 Bourne Close**

Scale: 1:500	Drawn By: SMA	Checked By:	Approved By:
	Date: 02.03.20	Date:	Date:

**Drawing Number** 0002/A3/00227



**Notes**

- Existing Disabled Persons' Parking Place (At All Times) to remain.
- Existing Disabled Persons' Parking Place (8am-6.30pm Mon-Sat) to remain.
- Disabled Persons' Parking Place to be removed.
- Proposed Disabled Persons' Parking Place (At All Times).

Do not scale this drawing

Rev	Description	By	Date	CHK'd	Auth

**Oxford Direct Services**  
 Marsh Road, Oxford OX4 2HH  
 T: 01865 335400  
 E: oxforddirectservices@oxfordids.co.uk

**OXFORD**  
direct services

**Client**

**Project**

**DISABLED PERSONS' PARKING PLACES 2020**

**Title**

**Proposed Disabled Persons' Parking Place 33/35 Corunna Crescent**

Scale 1:500	Drawn By SMA	Checked By	Approved By
Date 03.03.20	Date	Date	Date

**Drawing Number** 0002/A3/00235 **Rev** A



- Notes
- Existing Disabled Persons' Parking Place (At All Times) to remain.
  - Existing Disabled Persons' Parking Place (8am-6.30pm Mon-Sat) to remain.
  - Disabled Persons' Parking Place to be removed.
  - Proposed Disabled Persons' Parking Place (At All Times).

Do not scale this drawing

--	--	--	--

Rev	Description	By	Date	CHK'd	Auth
<p><b>Oxford Direct Services</b>                      Marsh Road, Oxford OX4 2HH                      T: 01865 335400                      E: oxforddirectservices@oxfordds.co.uk</p>					

Client

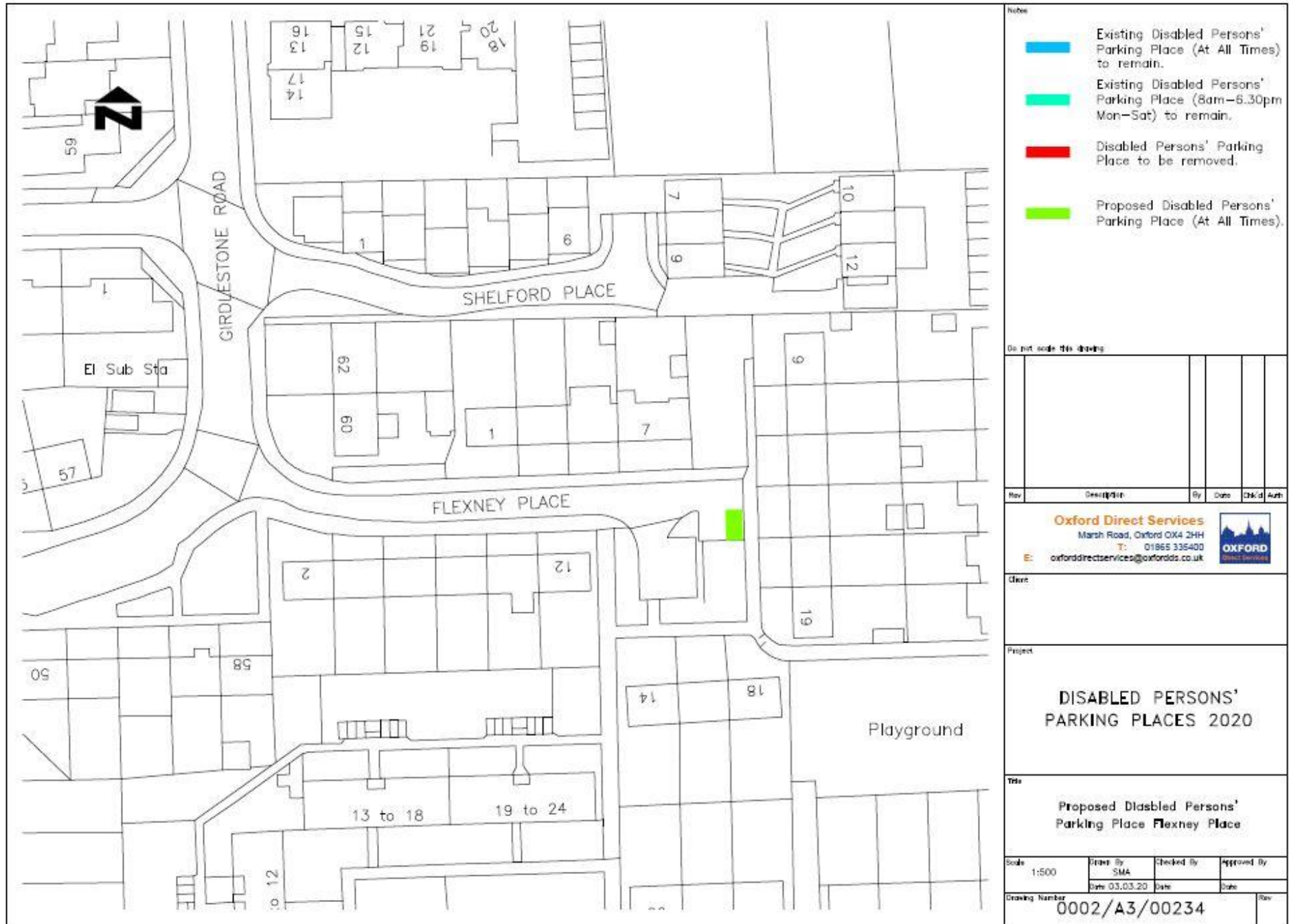
Project

**DISABLED PERSONS' PARKING PLACES 2020**

Title

**Removal of Disabled Persons' Parking Place 4 Divinity Road**

Scale	Order By	Checked By	Approved By
1:500	SMA		
	Date	Date	Date
	04.09.20		
Drawing Number	0002/A3/00290		Rev



- Notes
- Existing Disabled Persons' Parking Place (At All Times) to remain.
  - Existing Disabled Persons' Parking Place (8am-6.30pm Mon-Sat) to remain.
  - Disabled Persons' Parking Place to be removed.
  - Proposed Disabled Persons' Parking Place (At All Times).

Do not scale this drawing

--	--	--	--	--	--

Rev	Description	By	Date	CHK'd	Auth
-----	-------------	----	------	-------	------

**Oxford Direct Services**  
 Marsh Road, Oxford OX4 2HH  
 T: 01865 335400  
 E: oxforddirectservices@oxfordids.co.uk



Client

Project

**DISABLED PERSONS' PARKING PLACES 2020**

Title

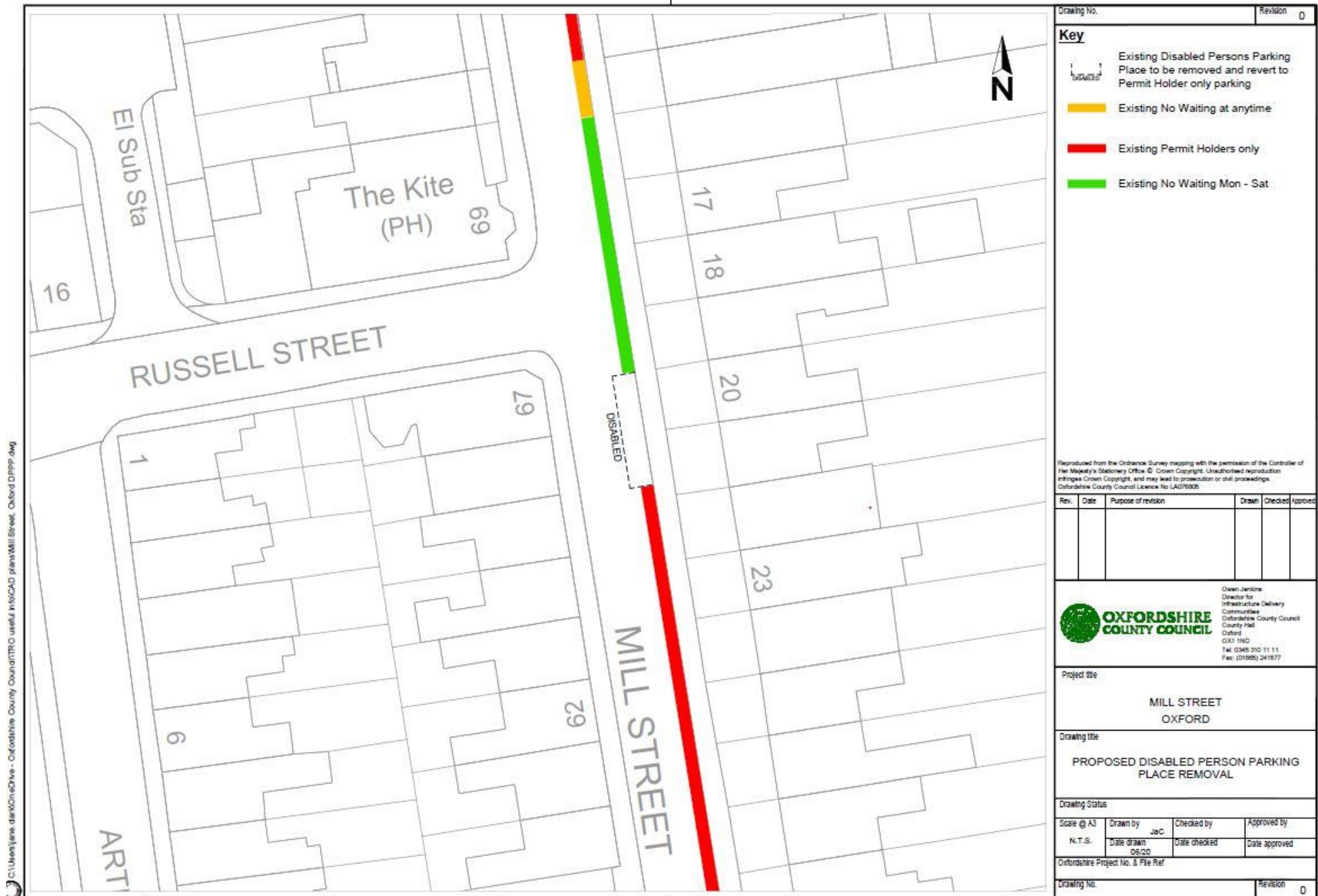
**Proposed Disabled Persons' Parking Place Flexney Place**

Scale	Drawn By	Checked By	Approved By
1:500	SMA		
	Date	Date	Date
	03.03.20		

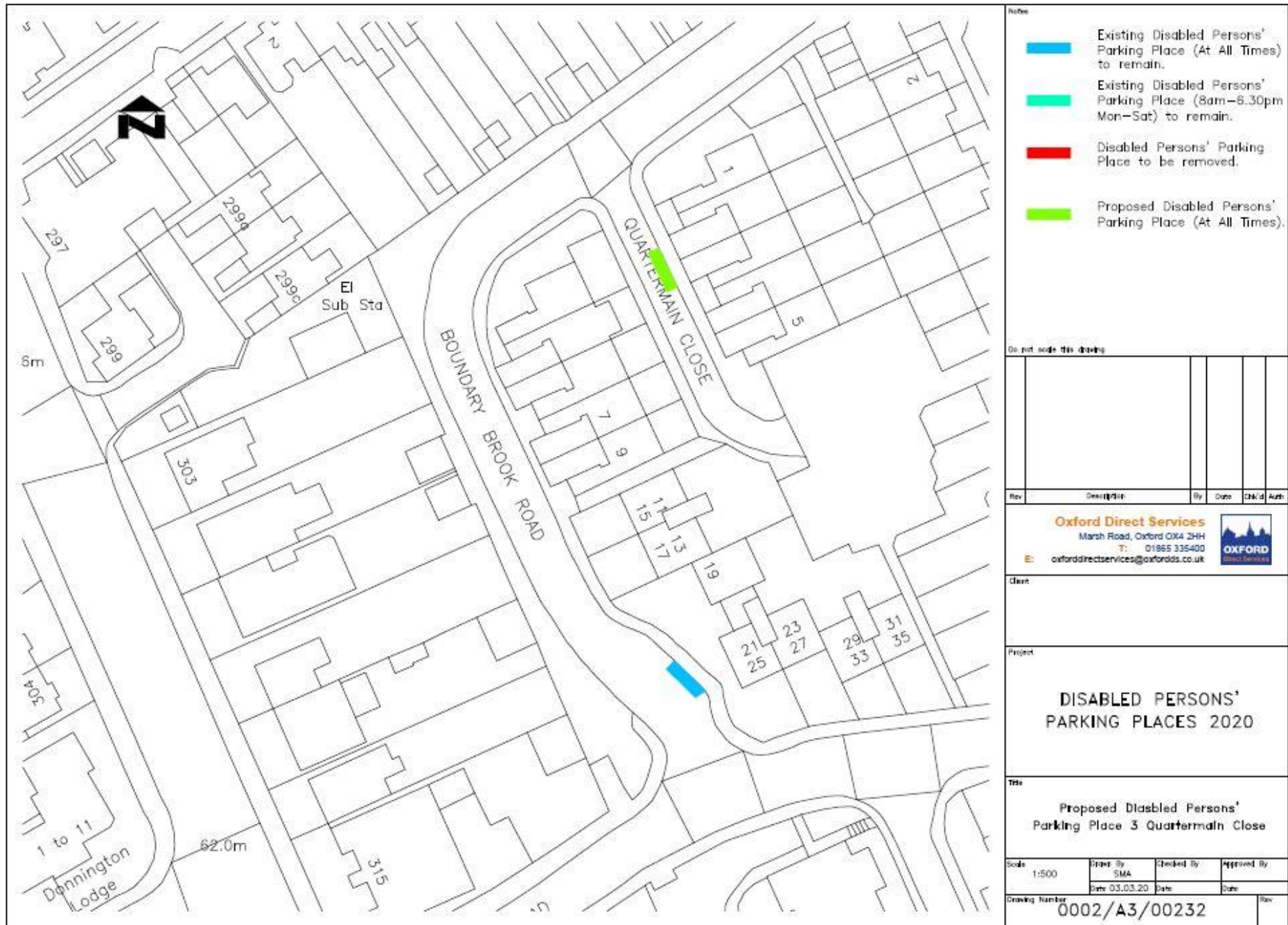
Drawing Number

**0002/A3/00234**





Drawing No.	Revision				
	0				
<b>Key</b>					
Disabled	Existing Disabled Persons Parking Place to be removed and revert to Permit Holder only parking				
Yellow	Existing No Waiting at anytime				
Red	Existing Permit Holders only				
Green	Existing No Waiting Mon - Sat				
Reproduced from the Ordnance Survey mapping with the permission of the Controller of Her Majesty's Stationery Office © Crown Copyright. Unauthorised reproduction infringes Crown Copyright, and may lead to prosecution or civil proceedings. Oxfordshire County Council Licence No LA070608					
Rev.	Date	Purpose of revision	Drawn	Checked	Approved
Owen Jenkins Director for Infrastructure Delivery Communities Oxfordshire County Council County Hall Oxford OX1 1ND Tel: 0345 310 11 11 Fax: (01865) 241877					
Project title					
MILL STREET OXFORD					
Drawing title					
PROPOSED DISABLED PERSON PARKING PLACE REMOVAL					
Drawing Status					
Scale @ A3	Drawn by	Checked by	Approved by		
N.T.S.	Date drawn	JaC	Date checked	Date approved	
	05/20				
Oxfordshire Project No. & File Ref					
Drawing No.					Revision
					0



Do not scale this drawing			
Rev	Description	By	Date
<b>Oxford Direct Services</b> Marsh Road, Oxford OX4 2HH T: 01865 336400 E: oxforddirectservices@oxfordds.co.uk			
Client			
Project			
<b>DISABLED PERSONS' PARKING PLACES 2020</b>			
Title			
Proposed Disabled Persons' Parking Place 3 Quartermain Close			
Scale	Drawn By	Checked By	Approved By
1:500	SMA		
	Date	Date	Date
	03.03.20		
Drawing Number			Rev
0002/A3/00232			

RESPONDENT	SUMMARISED COMMENTS
(1) Traffic Management Officer, (Thames Valley Police)	<b>No objection</b>
(2) Abingdon Town Council	<b>No objection</b>
<i>Bourne Close (Oxford) - Proposed new DPPP</i>	
(1) Local Resident, (Bourne Close)	<b>Concerns</b> (Bourne Close) – It would be grossly unfair to put another disabled parking place in this cul-de-sac where parking is already a problem.
(2) Local Resident, (Bourne Close)	<b>Concerns</b> (Bourne Close) – Where the parking space is proposed this is a turning point for all residents in the close. Requests that the disabled bay is positioned bearing this in mind.
(3) Local Resident, (Bourne Close)	<b>Concerns</b> (Bourne Close) – I feel that if this space is not designated to a particular person then this would be a waste of a space in Bourne Close which is already short of parking spaces for existing residents.
(4) Local Resident, (Bourne Close)	<b>Objection</b> (Bourne Close) – This area is a turning point for vehicles, I have requested that this should be a no parking area, but have never had a response. Damage has occurred to the wall adjacent to the turning point where vehicles are parked in this area and obstruct the turning point. This affects the daily collections and drop offs for ambulance drivers as they attempt to reverse into this turning point and have been unable to due to vehicle parked in the turning point.
(5) Local Resident, (Bourne Close)	<b>Concerns</b> (Bourne Close) – The space outside 21 Bourne Close is a turning space, required for emergency services and other vehicles, NOT a parking space. Currently many visitors and residents use the turning area to park in.

CMDE10

<p>(6) Local Resident, (Bourne Close)</p>	<p><b>Concerns</b> (Bourne Close) – I do not mind if a disabled space is provided as long as the turning area is widened by taking away some of the grass verge. If it is widened and doubled yellow lines are installed then ambulances and delivery vans can turn around.</p>
<p><i>Bramling Way (Oxford) – Proposed new DPPP</i></p>	
<p>(7) Local Resident, (Bramling Way)</p>	<p><b>Support</b> (Bramling Way) – I am supporting the proposal as I am disabled and unable to walk far and unable stand for to long it would be a great help for me.</p>
<p><i>Corunna Crescent (Oxford) - Proposed new DPPP</i></p>	
<p>(8) Local Resident, (Corunna Crescent)</p>	<p><b>Concerns</b> (Corunna Crescent) - If the space is outside number 35 then that will leave a space outside 33, where a less than considerate person who does not live there, or even in our road will park and have no clue that they are preventing us from reversing off our drive. If you saw the actual position of our drive you would see how it would affect us. I think that outside Number 33 with the front of the space in line with their gate would suit most people including us and still allow the disabled occupant of 35 to access any vehicle.</p>
<p><i>Divinity Road (Oxford) - Proposed removal of DPPP</i></p>	
<p>(9) Local Resident (Divinity Road)</p>	<p><b>Objection</b> (Divinity Road) - Regarding the disabled parking space on divinity road, I am a disabled person with a badge living at number 5 where a parking space is very necessary. Please could you do what you can so the spaces there next to the coop stay disabled bays.</p>
<p><i>Farndon Road (Oxford) - Proposed new DPPP</i></p>	
<p>(10) Local Resident (Farndon Road)</p>	<p><b>Support</b> (Farndon Road) - I am delighted to see that the Public Notice mentions a DPPP outside 21 Farndon Road, my address. Of course I am very much in favour of this. I very much look forward to the implementation of this parking place.</p>

CMDE10

<i>Flexney Place (Oxford) - Proposed new DPPP</i>	
(11) Local Resident (Flexney Place)	<b>Concerns</b> (Flexney Place) - There are 7 properties in Flexney Place that cannot accommodate off-street parking. There are 7 on-street parking places. This may be a co-incidence. Two of the properties unable to accommodate off-street parking are HMOs (House in Multiple Occupancy). Due to the number of cars per household, obtaining a parking space at any given time is a lottery. This has been the case for many years and apart from the occasional squabble is manageable, although not ideal. I am eligible to apply for a Disabled Parking Permit, we currently have a 24 Hour Residential Carers permit. Our property cannot accommodate off-street parking. My next door neighbour is registered disabled. Her property cannot accommodate off-street parking. I believe that another individual residing in one of the properties unable to accommodate off-street parking is also registered disabled. I'm not sure therefore what the benefit would be in allocating one of the on-street parking bays as a Disabled Person Parking Place. Three spaces would be excessive, two would be preferential.
(12) Local Resident (Flexney Place)	<b>Concerns</b> (Flexney Place) - Regarding the disabled parking we have no objections . Residents have had lots of problems getting in & out of their house. They even had their drive done alongside ours hoping they could get off street parking but despite paying the council fees & going from pillar to post for 6 months, we were turned down. If you drive into to Flexney, everyone has off street parking available to them except three properties (ours included) all can park in our drive way but aren't allowed to. I would appreciate it if you helped us get access to our drive ways that way 5 cars would be taken off the street which would ease tensions in the place as there is a lot of arguing & unpleasantries as people from the flats on Girdlestone road also come and park in the the parking bays. I urge you to look at this matter carefully please as there have been 3 accidents recently 2 hit & runs where thousands of pounds damage has been done but no details were left. I'm afraid there are too many incidents & stories to mention but to cut a long story short, if we sacrifice 1 parking space outside 17 Flexney then no 19 can park in their driveway. This way they will have easy access to their home. Disabled bays are a good idea but there's no guarantee they will get a spot because others will park there & they will be back having to try to find a space on the grass verge.
<i>Mill Street (Oxford) - Proposed removal of DPPP</i>	
(13) Local Resident (Mill Street)	<b>Objection to full removal</b> (Mill Street) - My mother is still having issues getting into the car whilst it's parked on the drive simply because of the slight downhill ground and her health conditions put together, all this will be harder for her when the ramp is fitted. She is much more comfortable getting into the car when at the disabled parking space. I can understand the need to decrease the disabled parking space but removing it all together and saying it's a redundant

CMDE10

	<p>space is not right in my opinion as it's clearly being used still. I also understand the discussion we had about there being an off road parking however I've explained a number of time's the difficulties we have and my mother has to go through to get in. I know that there can be exceptions made on your side as I'm sure you would take each case separately.</p>
<p>(14) Local Resident (Mill Street)</p>	<p><b>Objection to removal</b> (Mill Street) - I am emailing you to object to the removal of the disabled parking space between 20-21 Mill Street Oxford. I feel strongly that this parking space should not be removed as it has been used constantly for the last 20 years by the same family who live close in Mill Street. I also feel that the removal of the disabled space will NOT in the long term increase the parking capacity in our area as I think that this space will be lost when occupants turn their front gardens into parking spaces for their cars. This means that the space is lost in front of the property so as to give access for the car to enter and leave. I think that it is important to encourage the retention of front gardens for aesthetics, the environment and the over effect of the area. I would therefore strongly recommend that this is not removed.</p>
<p><i>Quartermain Close (Oxford) - Proposed new DPPP</i></p>	
<p>(15) Local Resident (Quartermain Close)</p>	<p><b>Support</b> (Quartermain Close) - I have no objection to the space being proposed.</p>
<p>(16) Local Resident (Quartermain Close)</p>	<p><b>Objection</b> (Quartermain Close) - Unfortunately, there has been a recent increase in cars from outside of the neighbourhood parking in the area and we struggle to park in our usual spaces. We suspect that this is caused by the number of people preferring to drive close to the city and then walk the remaining distance rather than using public transport or paying to park. If a disabled parking bay were located outside of 3 Quartermain Close <i>only</i>, so that this did not extend along the roadside beyond the adjoining line of other properties, there would still be room for two cars to park in the same comfort as they have for years. Designating the whole of this stretch of roadside would loose a space for the street overall. This would only make the situation worse, increasing the impact which the recent influx of cars parking from outside of the area is having on residents. I understand that resident's parking has recently been introduced in other areas within 'walk &amp; commute' distance of the city centre to address this same issue (Sandhills, Marston North, and Waterways). If this could be done here, this would solve the growing issues for all residents, not just one house. Due to the above concerns we object to a full-length disabled parking bay being formed on the roadside where two cars would normaly park.</p>
<p><i>West Street (Oxford) - Proposed new DPPP</i></p>	

CMDE10

<p>(17 ) Local Resident (West Street)</p>	<p><b>Support</b> (West Street) - I am in favour of additional parking spaces for disabled motorists. However, I would like you to be aware that I often find it challenging to obtain parking on Osney Island notwithstanding the fact that I have paid over £600 for residential parking permits over the past ten years. Therefore, I would prefer it if the County Council created additional disabled parking in places where it does not reduce the stock of existing parking spaces. To give you an example, there were until recently free parking spaces near Botley Recreation Ground which have in the last year become pay and display. Could not additional disabled parking spaces be sited there which is more convenient for the Rec. for the local primary school, and local services?</p>
<p>(18 ) Local Resident (West Street)</p>	<p><b>Support</b> (West Street) – I am in support of the disabled parking space on West Street, Osney. This will not impact or reduce the number of carpark spaces in the area as the disabled person already parks on the street, but often has to walk a long way back to her house, with considerable mobility issues.</p>
<p><i>Boxhill Walk (Abingdon) - Proposed new DPPP</i></p>	
<p>(19) Local Resident (Boxhill Walk)</p>	<p><b>Support</b> (Boxhill Walk) – I support this application so that disabled persons have access to St Nicolas Primary School, which does not have its own on-site disabled parking facilities.</p>
<p>(20) Local Resident (Boxhill Walk)</p>	<p><b>Support</b> (Boxhill Walk) – I've spent 10 years getting to St nics, mostly by cycling or walking with my disabled child. Occasionally I need to drive and it is awful, the parents abandon their cars all over the place, even on the double yellow lines. I personally think the whole bay should be for disabled use, one is a good start.</p>
<p>(21) Local Resident (Boxhill Walk)</p>	<p><b>Support</b> (Boxhill Walk) – I support the creation of all the disabled parking bays as I have a disabled child and I know how difficult immobility makes life for us. I particularly support the boxhill walk one as my friends disabled son attends St Nicholas school and she struggles every single morning with parking when taking him to school. Life is hard enough for people with disabilities without adding the nightmare of parking into the equation.</p>
<p>(22) Local Resident (Boxhill Walk)</p>	<p><b>Support</b> (Boxhill Walk) – It would benefit for easier school access as currently it is very difficult to safely drop children with extra needs off at school.</p>
<p>(23) Local Resident (Boxhill Walk)</p>	<p><b>Support</b> (Boxhill Walk) – I support this disabled parking place.</p>

CMDE10

<p>(24) Local Resident (Boxhill Walk)</p>	<p><b>Support</b> (Boxhill Walk) – There are a number of families at St Nicolas School who would greatly benefit from disabled parking provision, as there is none on the school premises and parking in the area can be very difficult at busy times, meaning families may have to park quite some distance from the school. This presents additional challenges for families with disabled children who attend the school.</p>
<p>(25o) Local Resident (Boxhill Walk)</p>	<p><b>Support</b> (Boxhill Walk) – St Nicolas school does not have its own on-site disabled parking provision so this will be helpful to a number of school families.</p>